

Geometry

Unit 1C Review

Name: _____

Name the corresponding angles and sides for each pair of congruent triangles.

1. $\triangle DEF \cong \triangle PQR$ $\angle D \cong \angle P$ $\angle E \cong \angle Q$ $\angle F \cong \angle R$
 $\overline{DE} \cong \overline{PQ}$ $\overline{EF} \cong \overline{QR}$ $\overline{DF} \cong \overline{PR}$

2. $\triangle FMG \cong \triangle HNJ$
 $\angle F \cong \angle H$ $\overline{FM} \cong \overline{HN}$
 $\angle M \cong \angle N$ $\overline{MG} \cong \overline{NJ}$
 $\angle G \cong \angle J$ $\overline{FG} \cong \overline{HJ}$

3. $\angle A \cong \angle Z$

4. $\angle B \cong \angle Y$

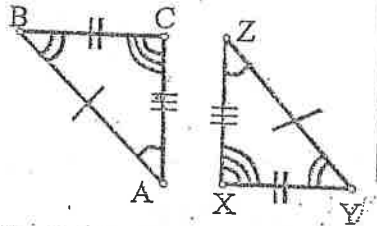
5. $\angle C \cong \angle X$

6. $\overline{AB} \cong \overline{YZ}$

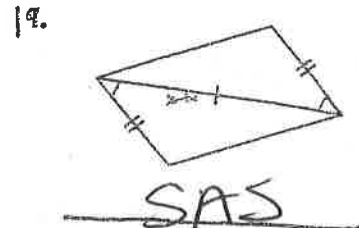
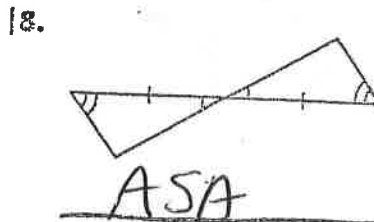
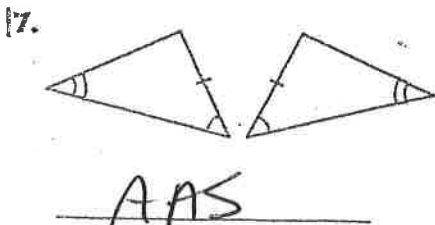
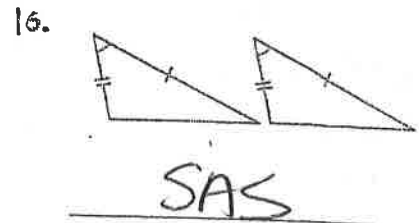
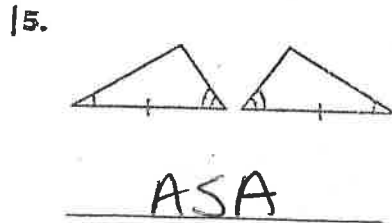
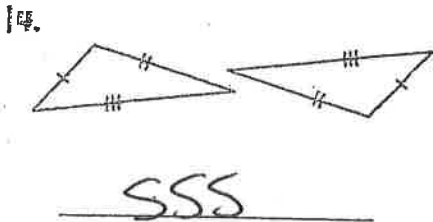
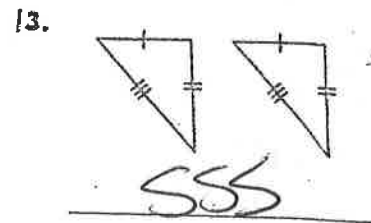
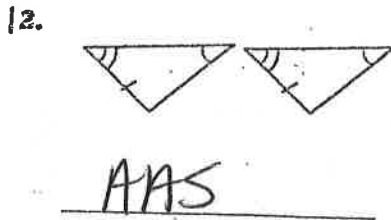
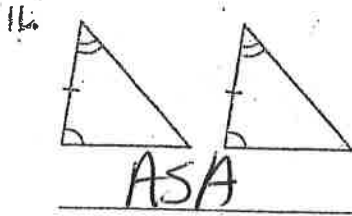
7. $\overline{BC} \cong \overline{XY}$

8. $\overline{CA} \cong \overline{XZ}$

9. $\triangle ABC \cong \triangle ZYX$ 10. $\triangle YXZ \cong \triangle BCA$



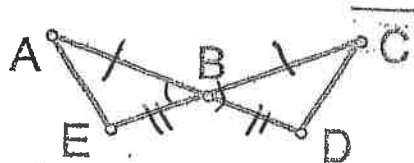
Determine which rule is used to prove that the triangles below are congruent. Write ASA, SSS, AAS, or SAS under each pair of triangles.



20.

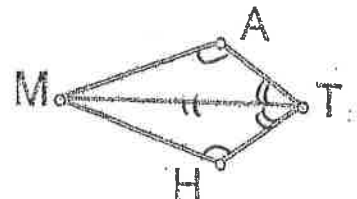
21.

Given: $\overline{AB} \cong \overline{CB}$
 $\overline{EB} \cong \overline{DB}$
 Prove: $\triangle ABE \cong \triangle CBD$

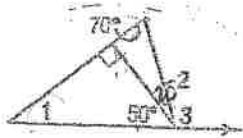


SAS

Given: $\angle A \cong \angle H$
 MT bisects $\angle ATH$
 Prove: $\triangle MAT \cong \triangle MHT$

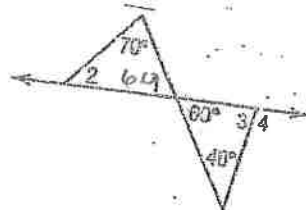


AAS



22. What is $m\angle 1$? 40°

23. What is $m\angle 2$? 20°

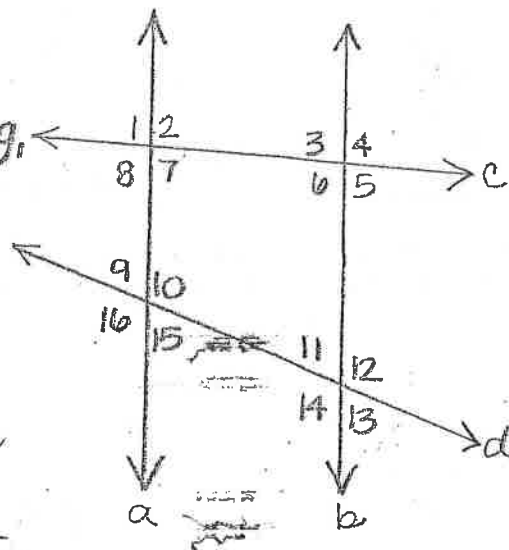


24. What is $m\angle 1$? 60°

25. What is $m\angle 2$? 50°

26. What is $m\angle 3$? 80°

Identify each pair of angles as vertical, linear pair, corresponding, consecutive interior, consecutive exterior, alternate interior, or alternate exterior.



27. 2 and 6
alt int

28. 4 and 6
vertical

29. 7 and 10
cons. int

30. 4 and 14
alt ext.

31. 9 and 15
vertical

32. 7 and 9
alt int

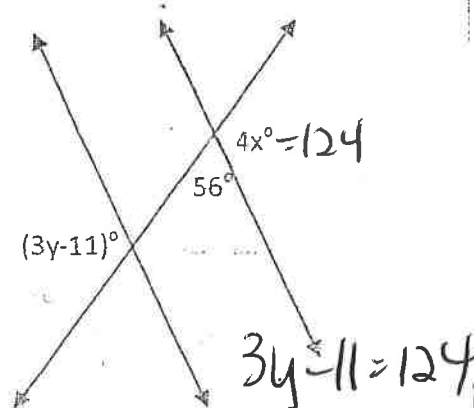
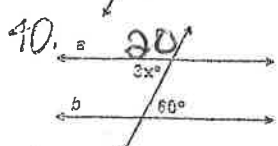
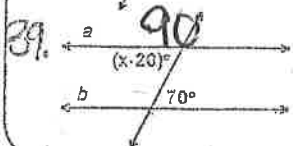
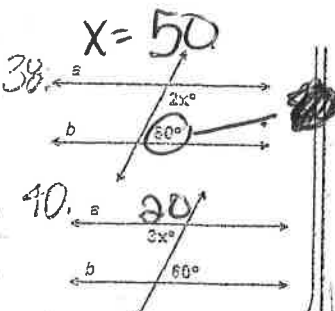
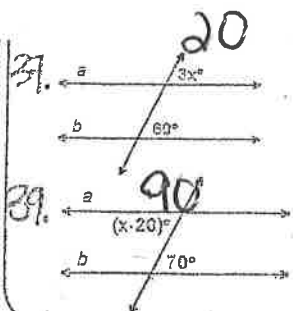
33. 16 and 14
corr

34. 6 and 7
cons. int.

35. 12 and 13
linear pair
solve for x.

36. 4 and 13
cons ext.

41. Find x and y in the figure.



$x = 31^\circ$
 $y = 45^\circ$

38 → circled is 80°

In the figure line p is parallel to line q. Find the measure of each angle.

42. Find $m \angle 3$ if $m \angle 1 = 110$. **110**

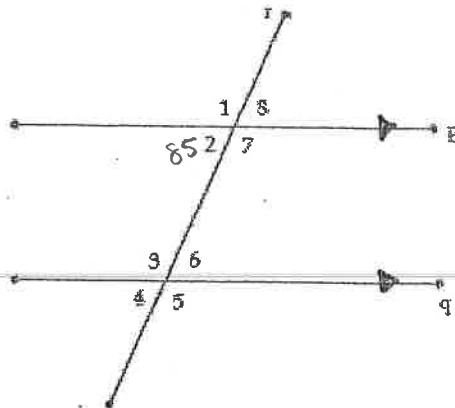
43. If $m \angle 2 = 85$, find $m \angle 3$. **95**

44. If $m \angle 4 = 35$, find $m \angle 8$. **35**

45. If $m \angle 6 = 70$, find $m \angle 2$. **70**

46. If $m \angle 3 = 120$, find $m \angle 8$. **60**

47. If $m \angle 7 = 5x + 10$ and $m \angle 5 = 40$, find x . **6**



48. In the figure, $m \angle 1 = 37^\circ$. Find the measure of each angle.

a) $\angle 9$ **37**

b) $\angle 13$ **37**

c) $\angle 5$ **37**

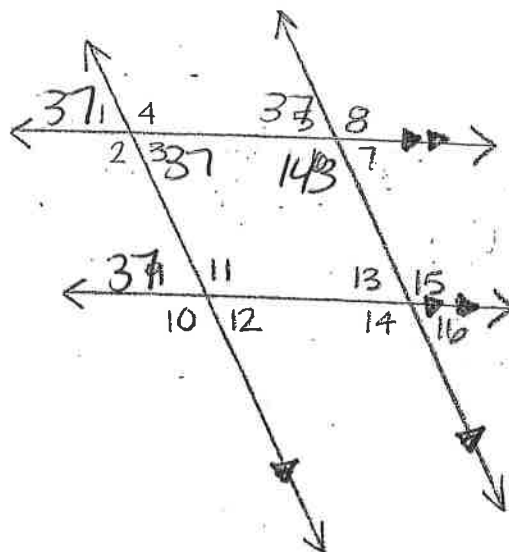
d) $\angle 7$ **37**

e) $\angle 3$ **37**

f) $\angle 10$ **143**

g) $\angle 6$ **143**

h) $\angle 15$ **143**



49. In the figure, $m \angle 3 = 98^\circ$ and $m \angle 12 = 55^\circ$. Find the measure of each angle.

a) $\angle 1$ **98**

b) $\angle 13$ **125**

c) $\angle 16$ **55**

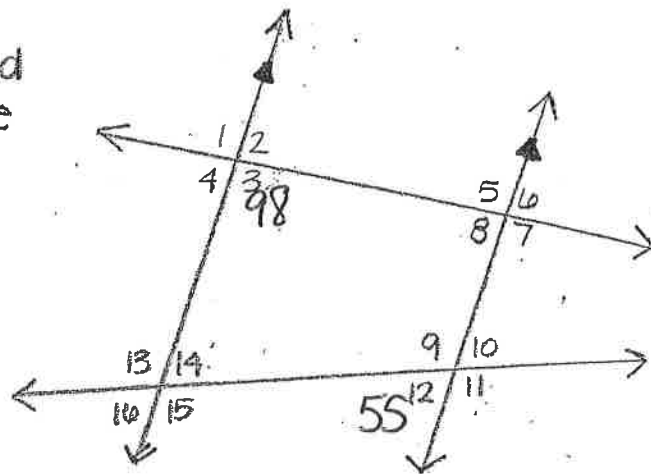
d) $\angle 4$ **82**

e) $\angle 8$ **82**

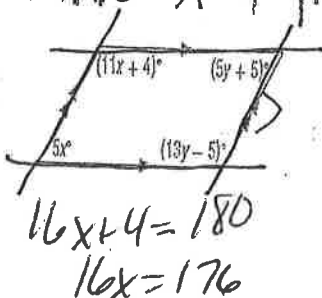
f) $\angle 6$ **82**

g) $\angle 14$ **55**

h) $\angle 11$ **125**



50. Find x & y .



$x = 11$

$y = 10$

$18y = 180$

$5x + 11x + 4 = 180$

$5y + 5 + 13y - 5 = 180$



1. The first part of the document discusses the importance of maintaining accurate records of all transactions.

2. It also highlights the need for regular audits to ensure the integrity of the data.

3. Furthermore, it emphasizes the role of technology in streamlining these processes.

4. The document also covers the challenges associated with data security and privacy.

5. It provides a detailed overview of the various risks and how to mitigate them.

6. Finally, it offers practical advice on how to implement these best practices effectively.

7. The document concludes by reiterating the importance of a proactive approach to data management.

8. It encourages organizations to stay updated with the latest industry trends and regulations.

9. Overall, this document serves as a comprehensive guide for anyone looking to improve their data management practices.

10. For more information, please contact our support team at [contact information].

11. We are committed to providing you with the highest quality of service and support.

12. Thank you for your interest in our products and services.