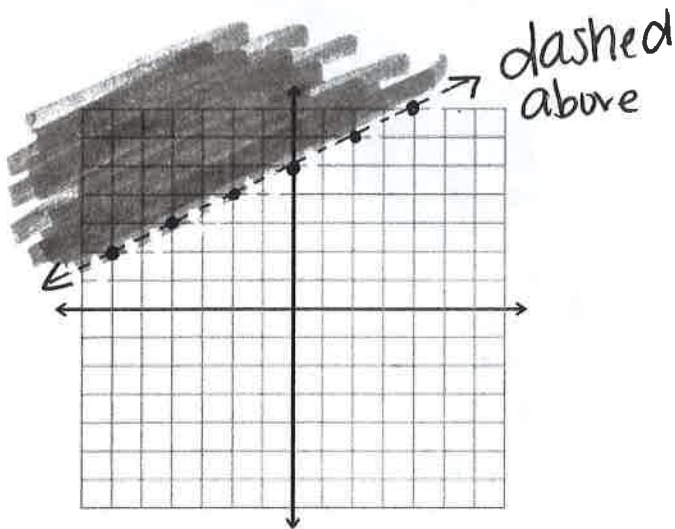


Graphing Inequalities and Systems of Inequalities Notes

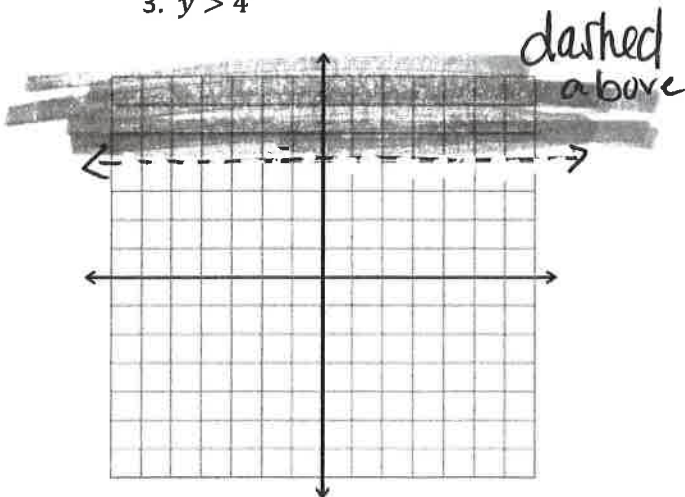
Boundary

$>$	dashed
\geq	Solid
$<$	dashed
\leq	Solid

1. $y > \frac{1}{2}x + 5$



3. $y > 4$

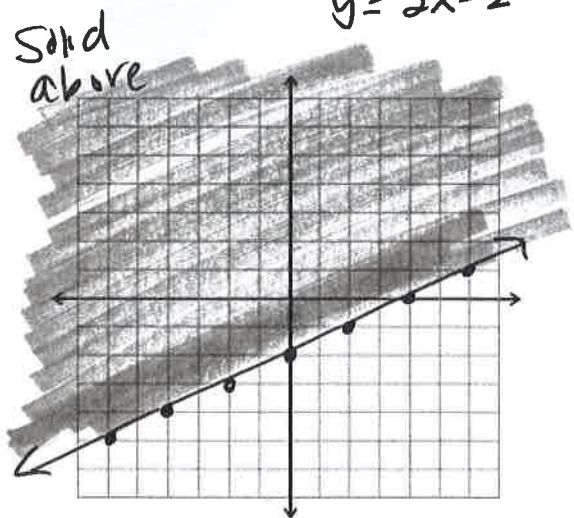


Shading

$>$	above
\geq	above
$<$	below
\leq	below

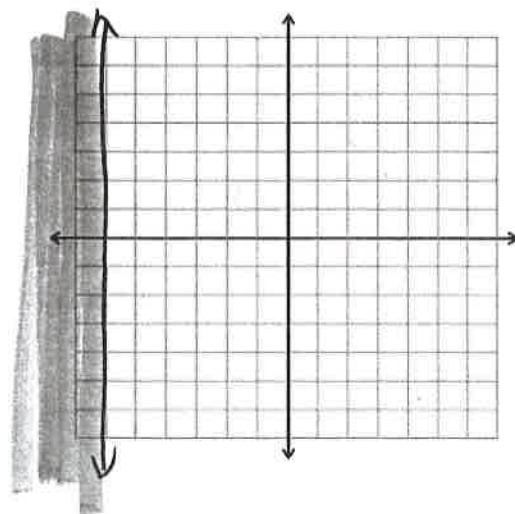
2. $x - 2y \leq 4$

$-2y \leq -x + 4$
 $y \geq \frac{1}{2}x - 2$



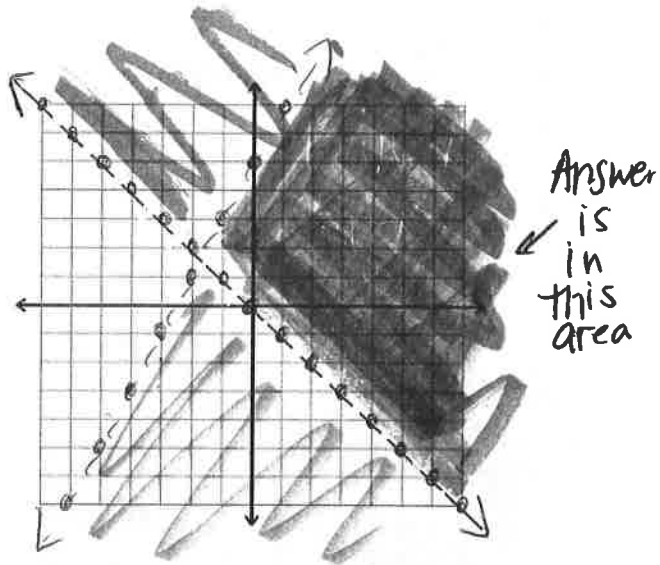
4. $x \leq -6$

Solid below



Graphing Inequalities and Systems of Inequalities Notes

5. $y > -x$ dashed above
 $y < 2x + 5$ dashed below



6. $-2x + y \geq -4$ $y \geq 2x - 4$ solid above
 $3x - 6y \geq 6$
 $-6y \geq -3x + 6$ solid below
 $y \leq \frac{1}{2}x - 1$ solid below

