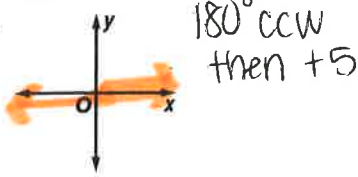


# 13-2 Skills Practice

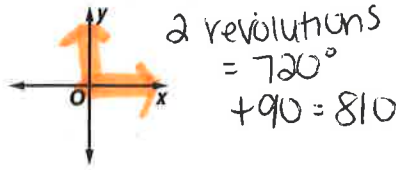
## Angles and Angle Measure

Draw an angle with the given measure in standard position.

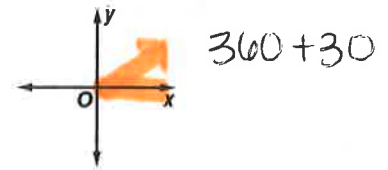
1.  $185^\circ$



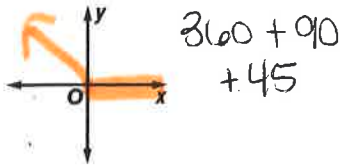
2.  $810^\circ$



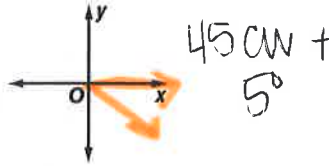
3.  $390^\circ$



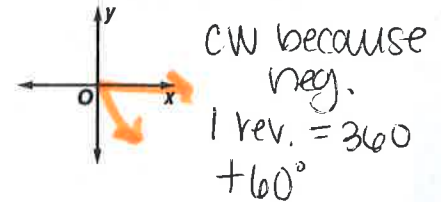
4.  $495^\circ$



5.  $-50^\circ$



6.  $-420^\circ$



Rewrite each degree measure in radians and each radian measure in degrees.

7.  $130^\circ = \frac{13\pi}{18}$

8.  $720^\circ = 4\pi$

9.  $210^\circ = \frac{7\pi}{6}$

10.  $90^\circ = \frac{\pi}{2}$

11.  $-30^\circ = -\frac{\pi}{6}$

12.  $-270^\circ = -\frac{3\pi}{2}$

13.  $\frac{\pi}{3} = 60^\circ$

14.  $\frac{5\pi}{6} = 150^\circ$

15.  $\frac{2\pi}{3} = 120^\circ$

16.  $\frac{5\pi}{4} = 225^\circ$

17.  $-\frac{3\pi}{4} = -135^\circ$

18.  $-\frac{7\pi}{6} = -210^\circ$

Find one angle with positive measure and one angle with negative measure coterminal with each angle.

19.  $45^\circ$   $405^\circ, -315^\circ$

20.  $60^\circ$   $420^\circ, -300^\circ$

21.  $370^\circ$   $10^\circ, -350^\circ$

22.  $-90^\circ$   $270^\circ, -450^\circ$

23.  $\frac{2\pi}{3}$   $\frac{8\pi}{3}, -\frac{4\pi}{3}$

24.  $\frac{5\pi}{2}$   $\frac{9\pi}{2}, -\frac{3\pi}{2}$

25.  $\frac{\pi}{6}$   $\frac{13\pi}{6}, -\frac{11\pi}{6}$

26.  $-\frac{3\pi}{4}$   $\frac{5\pi}{4}, -\frac{11\pi}{4}$